

CAPITOL TRUSS, INC.

E-Z TRIM

STRONG, FAST & SILENT FLOOR SYSTEMS

16" TRIMMABLE END OPEN WEB FLOOR TRUSSES

TECHNICAL GUIDE



Table of Contents:

2. Product overview
3. Span Charts
4. Do's & Don'ts
5. Typical Layout
- 6 -11. Details
12. Tables

Capitol Truss, Inc.
3165 Balm Rd.
Wetumpka, AL 36092

334-567-9295 phone
877-567-9295 toll free
334-567-9253 fax
www.capitoltruss.com

10/5/07

P.1

E-Z TRIM PRODUCT OVERVIEW

General Notes:

Our **E-Z TRIM** trusses:

- guarantee a *perfect fit* every time.
- have an *open web design* which allows for the passage of *A/C ductwork, plumbing & electrical wiring*.
- can be trimmed up to **12"** on each end.
- have wide nailing surfaces to guarantee a **SQUEAK FREE** floor (when properly installed).
- have *camber* built in to offset for dead load deflection. The amount of camber is based on span.
- have been *engineered and sealed*. Sealed truss drawings are available for submittals. Contact your supplier.
- have **"TOP"** clearly stamped on the ends of each truss for proper orientation.
- are built with **2x4 & 2x3 Southern Yellow Pine** kiln dried to 19% or less moisture content.
- are part of our company wide *quality control program* administered by Timber Products Inspection Inc.
- are **NON TREATED** – Use in dry service conditions only.
- are designed to *exceed* minimum code requirements. See span tables.

Caution: Improper permanent or temporary bracing could cause *property damage, serious personal injury or death*. Follow all bracing instructions detailed herein & follow handling, erection & bracing guidelines detailed in BCSI publications.

Contact **Capitol Truss** for any conditions deviating from those in this Technical Guide.

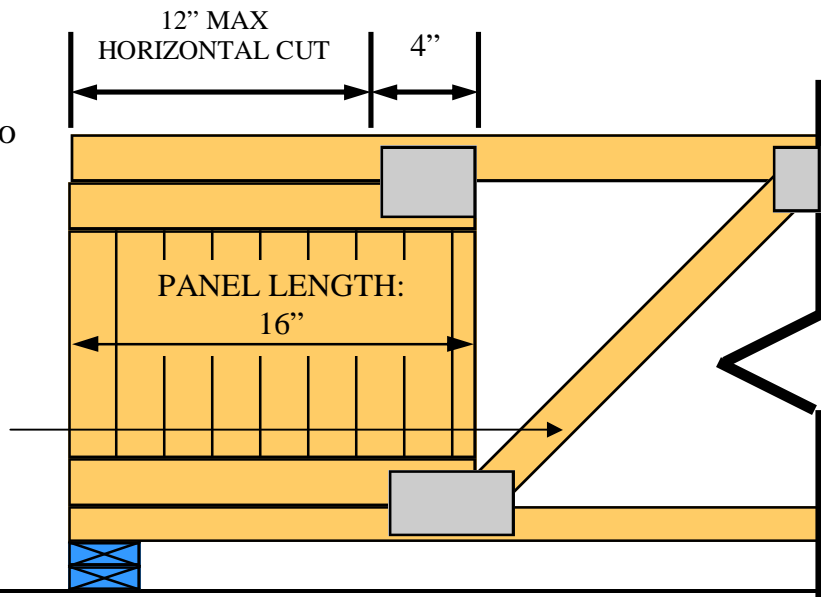
TRIMMABLE AREA:

Trim as needed up to 12 inches. Do Not cut or remove any portion of truss plates.

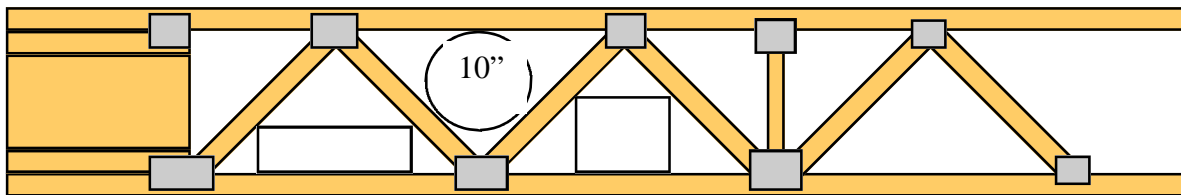
ORIENTATION:

Note that diagonal web always points down toward bearing. "TOP" will be stamped on top of truss.

Detail 7



OPENING SIZES:



SQUARE CLEARANCES:

6"x12"
7"x10"
8"x8"

SEE SPAN CHART FOR
CENTER A/C CHASE
OPENING SIZES (Next Page).

Detail 6

RESIDENTIAL 40# PSF TOP CHORD LIVE LOAD							40 - 10 - 0 - 5 = 55 PSF TOTAL LOAD	
LIVE LOAD DEFLECTION								
TRUSS		L/? - INCHES	L/? - INCHES	L/? - INCHES	L/? - INCHES		CHASE	
MODEL	SPAN	24" SPACING	19.2" SPACING	16" SPACING	12" SPACING	GRADE	+/- 1/4"	
16/3	3'-0"	999 - .00				2 / 2	1'-5"	
3/4	4'-0"	999 - .00				2 / 2	2'-0"	
16/5	5'-0"	999 - .04				2 / 2	2'-0"	
16/6	6'-0"	999 - .01				2 / 2	2'-0"	
16/7	7'-0"	999 - .02				2 / 2	2'-0"	
16/8	8'-0"	999 - .06				2 / 2	2'-0"	
16/9	9'-0"	999 - .05				2 / 2	2'-0"	
16/10	10'-0"	886 - .10				2 / 2	2'-0"	
16/11	11'-0"	999 - .08				2 / 2	2'-0"	
16/12	12'-0"	976 - .10				2 / 2	2'-0"	
16/14	14'-0"	999 - .10				2 / 2	2'-0"	
16/16	16'-0"	999 - .10				2 / 2	2'-0"	
16/18	18'-0"	999 - .15				2 / 2	2'-0"	
16/20	20'-0"	996 - .23				2 / 2	2'-0"	
16/22	22'-0"	773 - .33				2 / 2 - 2100	2'-0"	
16/24	24'-0"	583 - .48	730 - .38			2 / 1	2'-0"	
16/26	26'-0"		567 - .54	681 - .45		2 / 1 - 2	2'-0"	
16/28	28'-0"			551 - .60	735 - .45	2 / 2 - 2100-2	2'-0"	

40# LIVE LOAD

Table 1

Please Note:

Depth: 16"

The 16 (first 2 numbers in model #) designates 16" depth.

Construction:

-3'-0" thru 12'-0" trusses are built with 2x3 SYP material.

-14'-0" thru 28'-0" trusses are built with 2x4 SYP material.

Trimtable Area:

-3'-0" thru 12'-0" trusses are trimtable up to 1'-0" on *one end only*.

-14'-0" thru 28'-0" trusses are trimtable up to 2'-0" (1'-0" on *each end*)

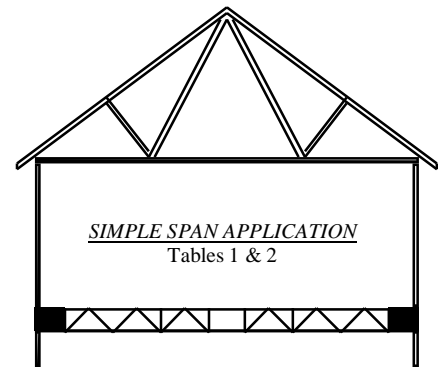
Chase Openings:

Chase opening sizes are shown Table 1, right hand column.

RESIDENTIAL 50# PSF TOP CHORD LIVE LOAD							50 - 10 - 0 - 5 = 65 PSF TOTAL LOAD	
LIVE LOAD DEFLECTION								
TRUSS		L/? - INCHES	L/? - INCHES	L/? - INCHES	L/? - INCHES			
MODEL	SPAN	24" SPACING	19.2" SPACING	16" SPACING	12" SPACING			
16/3	3'-0"	999 - .00						
16/4	4'-0"	999 - .01						
16/5	5'-0"	999 - .05						
16/6	6'-0"	999 - .01						
16/7	7'-0"	999 - .03						
16/8	8'-0"	999 - .07						
16/9	9'-0"	999 - .06						
16/10	10'-0"	999 - .11						
16/11	11'-0"	999 - .10						
16/12	12'-0"	999 - .13						
16/14	14'-0"	999 - .12						
16/16	16'-0"	999 - .13						
16/18	18'-0"	999 - .19						
16/20	20'-0"	796 - .29						
16/22	22'-0"	773 - .33						
16/24	24'-0"		584 - .48					
16/26	26'-0"			544 - .56				
16/28	28'-0"			450 - .73	577 - .57			

50# LIVE LOAD

Table 2

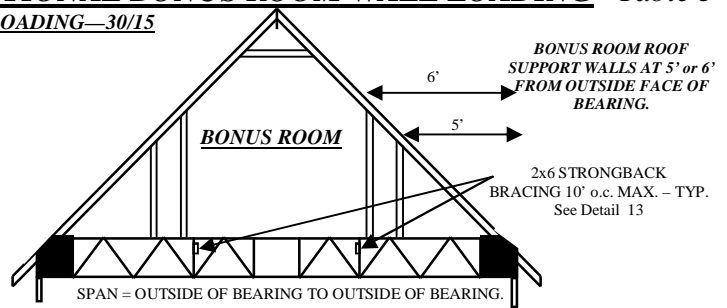


SPAN = OUTSIDE OF BEARING TO OUTSIDE OF BEARING.

RESIDENTIAL 40# PSF TOP CHORD LIVE LOAD WITH BONUS ROOM ROOF LOADING							40 - 10 - 0 - 5 = 55 PSF TOTAL LOAD	
LIVE LOAD DEFLECTION								
TRUSS		L/? - INCHES	L/? - INCHES	L/? - INCHES	L/? - INCHES			
MODEL	SPAN	24" SPACING	19.2" SPACING	16" SPACING	12" SPACING			
16/20	20'-0"		953 - .24					
16/22	22'-0"		752 - .34					
16/24	24'-0"		575 - .49					
16/26	26'-0"			541 - .56				
16/28	28'-0"				581 - .57			

ADDITIONAL BONUS ROOM WALL LOADING

Table 3



SPAN = OUTSIDE OF BEARING TO OUTSIDE OF BEARING.

- NOTES:** (For all span tables): Never install UPSIDE DOWN - "TOP" marked on all truss ends.
- Use 3/4" span rated subfloor that is both glued and nailed(screwed).
 - 2x6 Strongback Bracing at 10'-0" o.c. maximum is required (see *Detail 13*).
 - 1 3/4" minimum bearing width required (except as noted - see *Table 4*).
 - See 40# live load span table for chase sizes (Table 1 above).
 - Trusses with **TOTAL LOAD** deflections greater than 3/4" are shown in **BOLD**.
 - Use web stiffeners at any truss end supported by a truss hanger if the hanger does not provide support for the top chord of the truss.
 - Trusses are not evaluated for vibration. Vibration can be reduced by proper 2x6 strongback installation and direct applied diaphragm ceiling.
 - Refer to BCSI (produced by WTCA & TPI) for information on the correct handling, erection & temporary bracing of trusses.

Contact Capitol Truss staff (334-567-9295) for questions concerning any load condition not shown above.

DO's & DON'Ts

WHEN FRAMING WITH *E-Z TRIM* TRUSSES

DO:

- Brace trusses for rollover prior to allowing anyone on trusses. *See Details 8, 9 & 10 and BCSI-B7.*
- Brace trusses properly before proceeding with construction. *See BCSI-B7*
- Handle properly. *See BCSI-B7*
- Use permanent 2x6 strongback bracing installed at 10'-0" o.c. max. *See Detail 13.*
- Provide proper bearing width (min. 1 3/4" except as noted).
- Use 3/4" rated subfloor that is both glued & nailed (or screwed).
- Use web stiffeners at any truss end supported by a hanger if the hanger does not provide support for the top chord of the truss.
- Install with "TOP" stamp up. Diagonal webs closest to bearings will always point down toward bearing wall.
- Keep dry.
- Nail to bearing with two (2) 16d nails on each side spaced 1-1/2" from truss end.
- Minimize vibration by properly installing 2x6 strongbacks and direct applied diaphragm ceiling.
- Consider using Roof Trusses to transfer roof load thru exterior load bearing walls.
- Consider using 16" spacing in tile floor areas. Consult tile supplier for their requirements.
- Refer to *Table 5* for proper end closures due to Vertical Load Transfer at bearings.
- *See Details 4, 19, 21, & 23* for proper cantilever framing & cantilever limits.
- Brace roof framing on load bearing walls only.
- Transfer concentrated loads to foundation properly. *See Detail 14 & Table 5.*
- Coordinate truss layout with plumbing drains & A/C locations.
- Consult [Capitol Truss](tel:877-567-9295) (877-567-9295) for any conditions or applications not discussed in this Technical Guide.

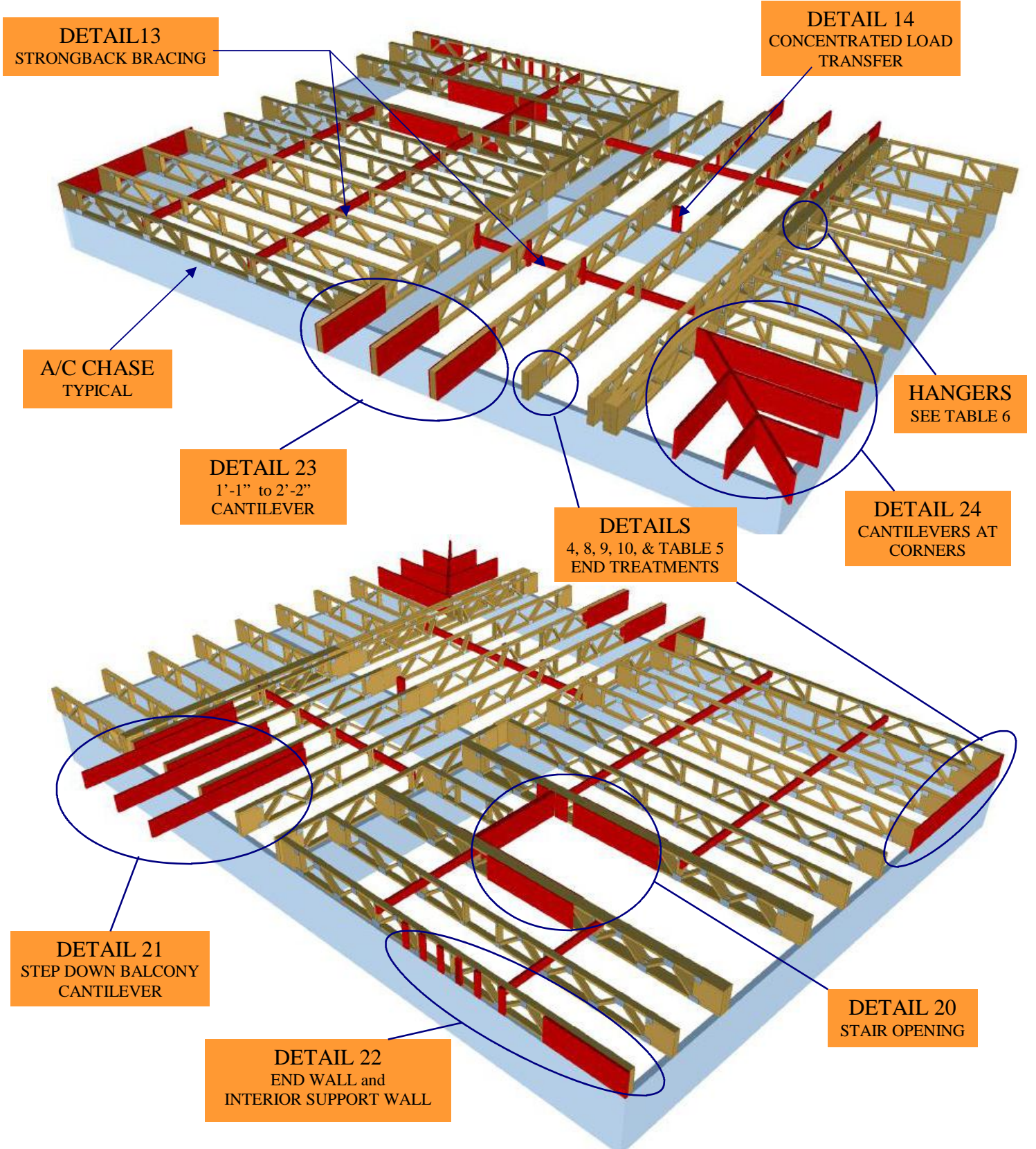
DON'T:

- Cut, Drill, Notch or Remove any portion of any truss chord, web or connector plate except as specified herein. *See Details 1, 2 & 3.*
- *Top chord bear* any truss. All trusses must bear on bottom chord.
- *Install truss upside down.* Install with "TOP" up.
- Cut or Drill Holes in trim truss panel. *See Detail 1.*
- Use as a beam or header except as shown herein. *See Details 20 & 24.*
- Handle improperly – *See BCSI-B7.*
- Use in *wet* service conditions or install in contact with concrete or masonry construction. Keep dry.
- Make rafter cuts more than 12" horizontally (or beyond edge of connector plates). *See Detail 5.*
- Cut heels lower than 4-1/2" when making rafter cuts. *See Detail 5.*
- **Overload small groups or individual trusses (i.e. units of plywood, lumber or drywall). Stack over beams or walls instead.**
- **Allow workers on top of unbraced trusses.**

Note: Should trusses become damaged, cut or installed incorrectly call [Capitol Truss](tel:877-567-9295) immediately at: 877-567-9295.

E-Z TRIM TYPICAL LAYOUT

(OPPOSITE VIEWS)



CAPITOL TRUSS, INC.
1-877-567-9295

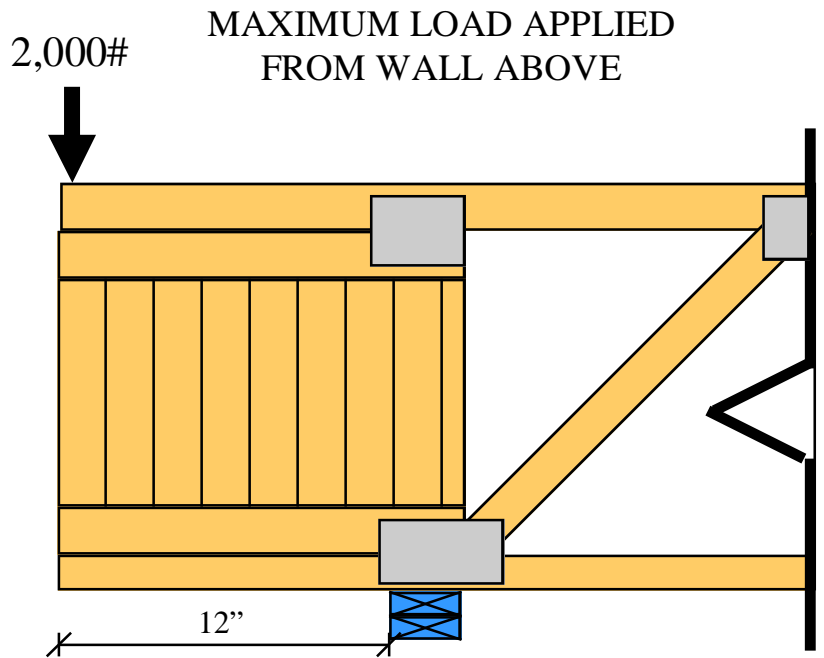
TYPICAL CANTILEVER

Engineering required in applications exceeding the following:

Maximum Cantilever: 12"

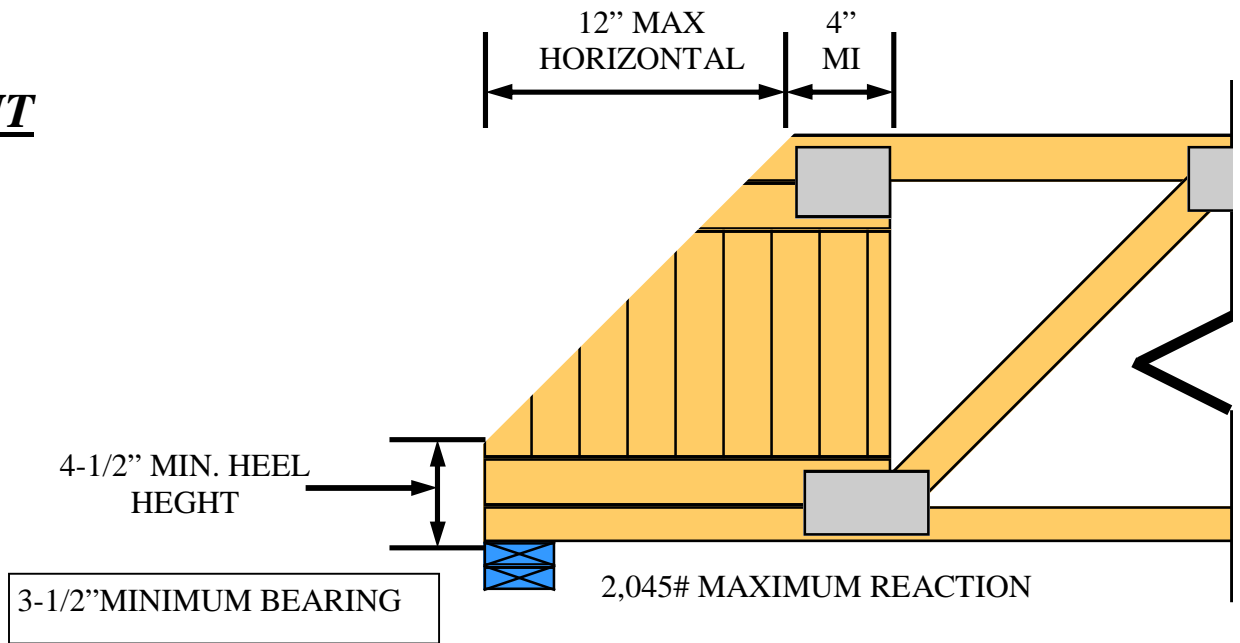
Maximum Point Load: 2,000#

Detail 4



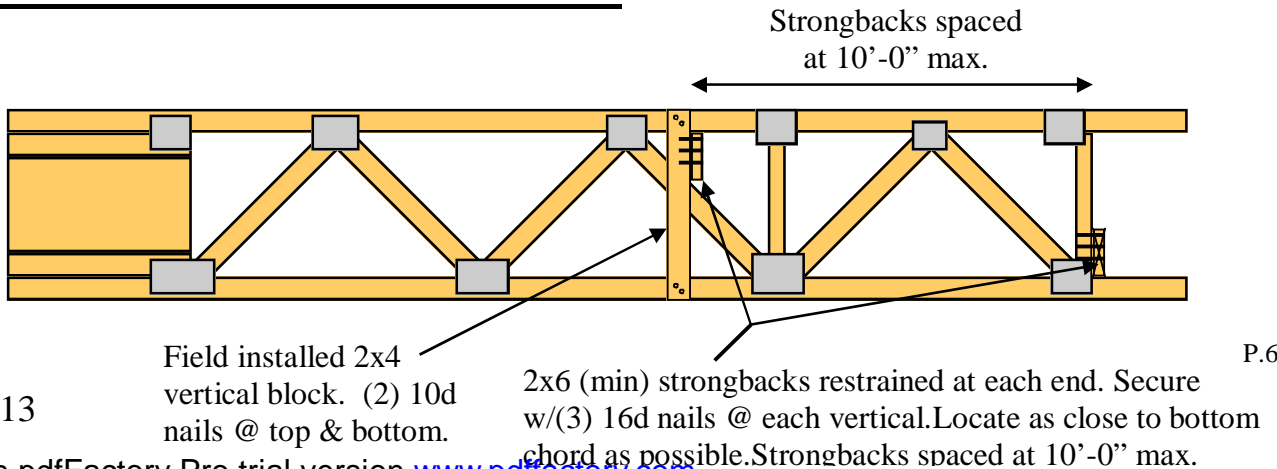
PROPER RAFTER CUT

Detail 5



REQUIRED STRONGBACK BRACING

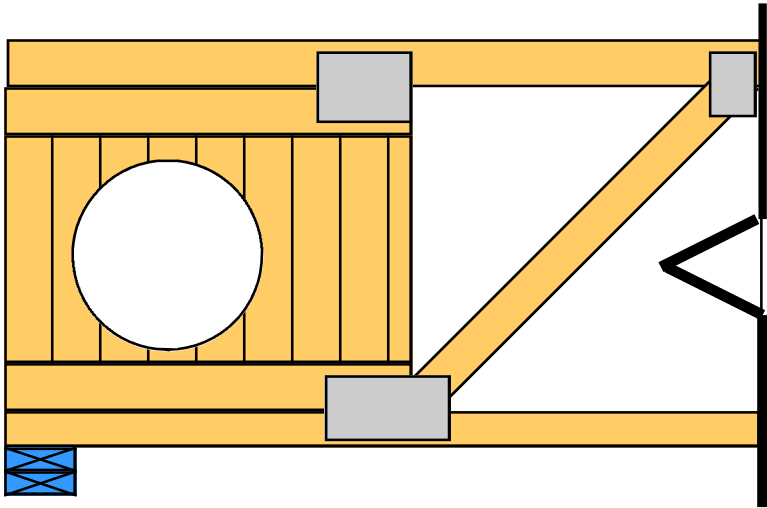
Detail 13



DO's & DON'Ts DETAILED

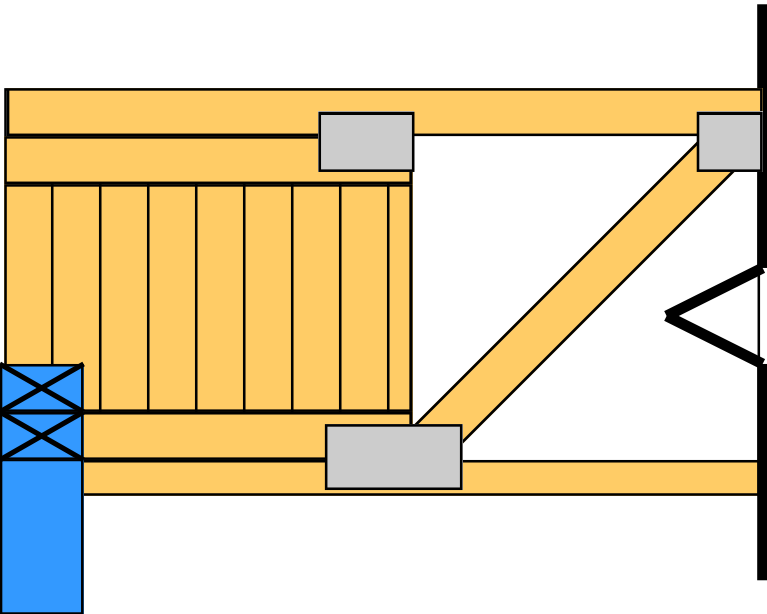
DON'T
CUT or DRILL
HOLES IN
PANEL!

Detail 1



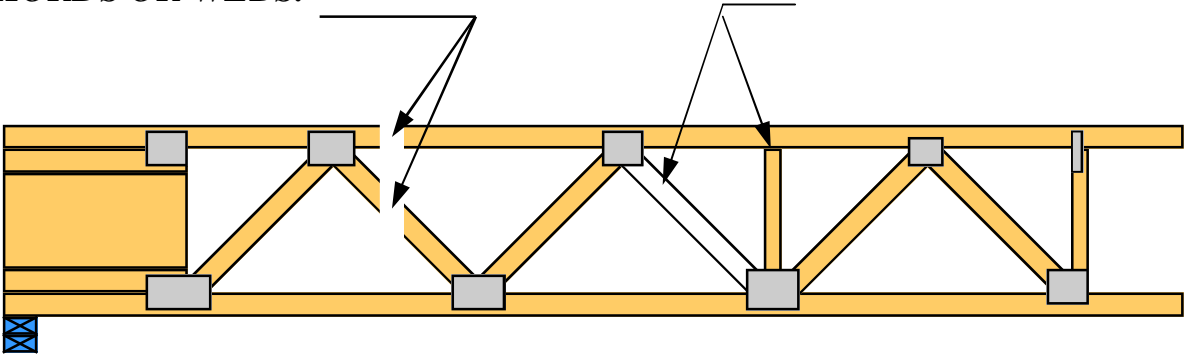
DON'T
NOTCH PANEL!

Detail 2



DON'T: CUT,
NOTCH OR DRILL
CHORDS OR WEBS.

DON'T: REMOVE
WEBS OR PLATES.



Detail 3

METHODS OF TRANSFERRING VERTICAL LOADS:

NO REINFORCEMENT

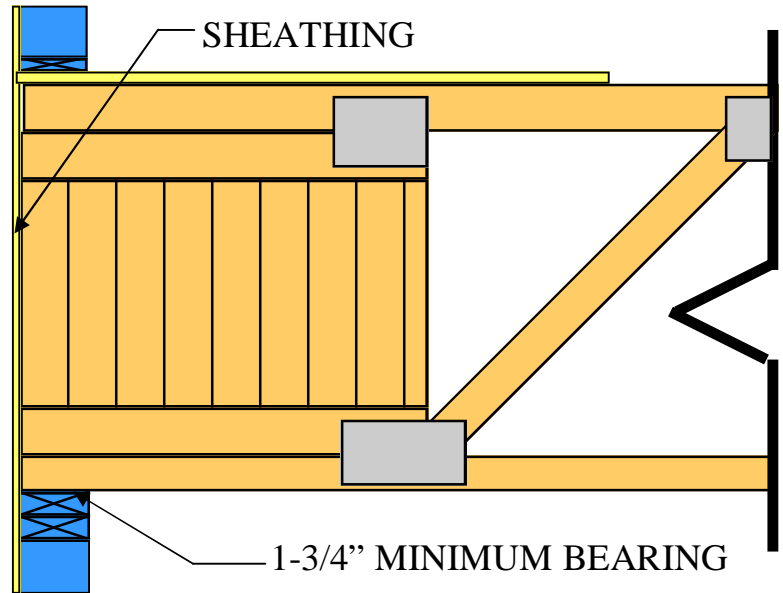
In many cases no reinforcement is necessary. Maximum allowable load transfer with no reinforcement is the difference between the maximum allowable reaction (Table 4) and actual truss reaction.

Example: Refer to Table 4 & Table 7 for reactions.

3-1/2" - truss = max transfer with
bearing reaction no reinforcement
or

3,000# - 1,000# = 2,000# max transfer
estimated with no reinforcement

DETAIL 8



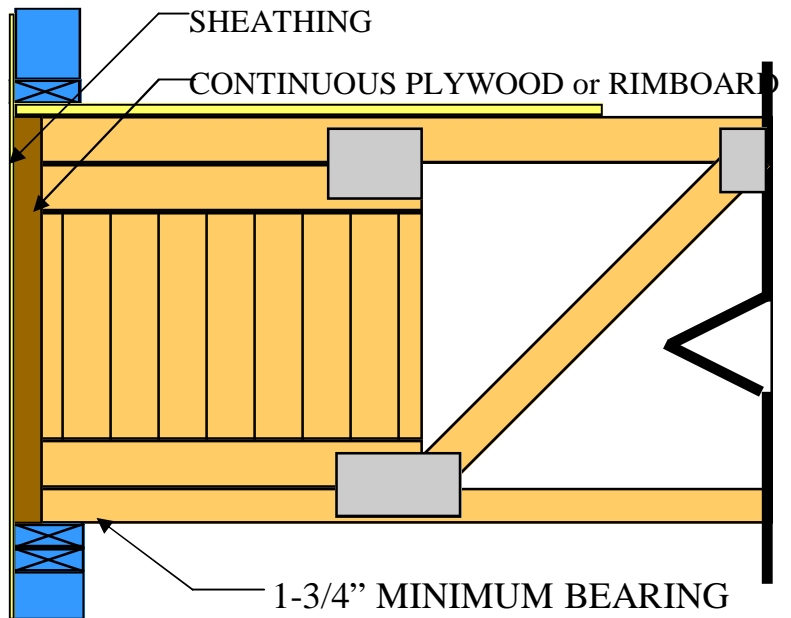
PLYWOOD OR RIMBOARD BANDING

MAXIMUM LOAD APPLIED FROM ABOVE:
500# plf to 4,400# plf

DEPENDENT ON SIZE

See Table 5

Detail 9



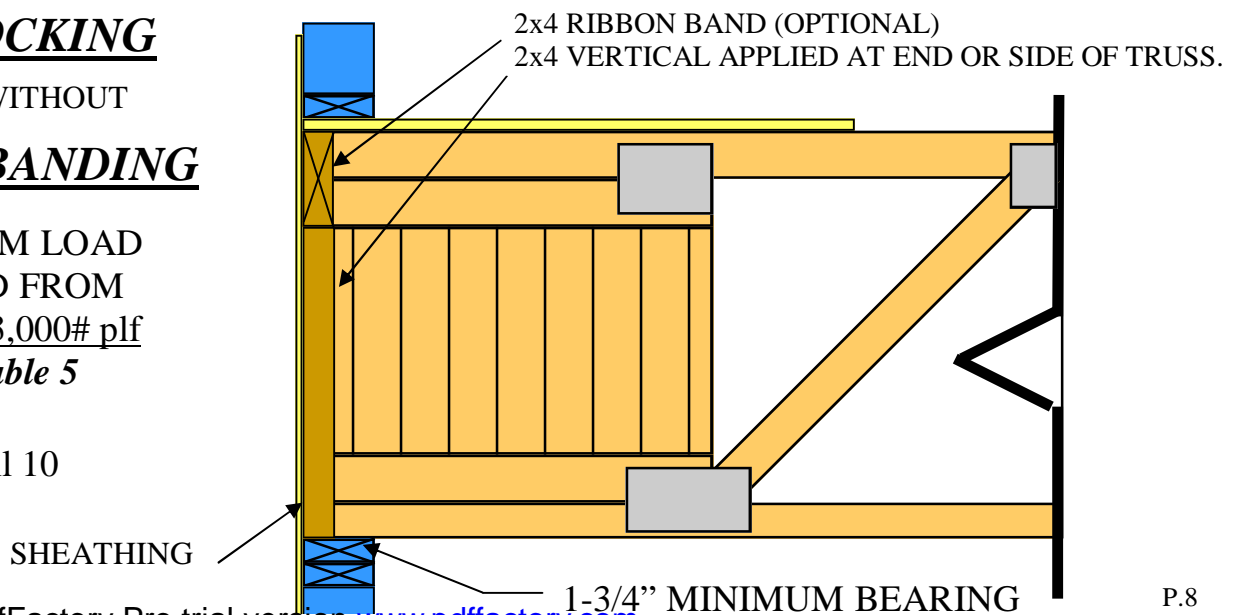
2x4 BLOCKING

WITH or WITHOUT

RIBBON BANDING

MAXIMUM LOAD APPLIED FROM ABOVE: 3,000# plf
See Table 5

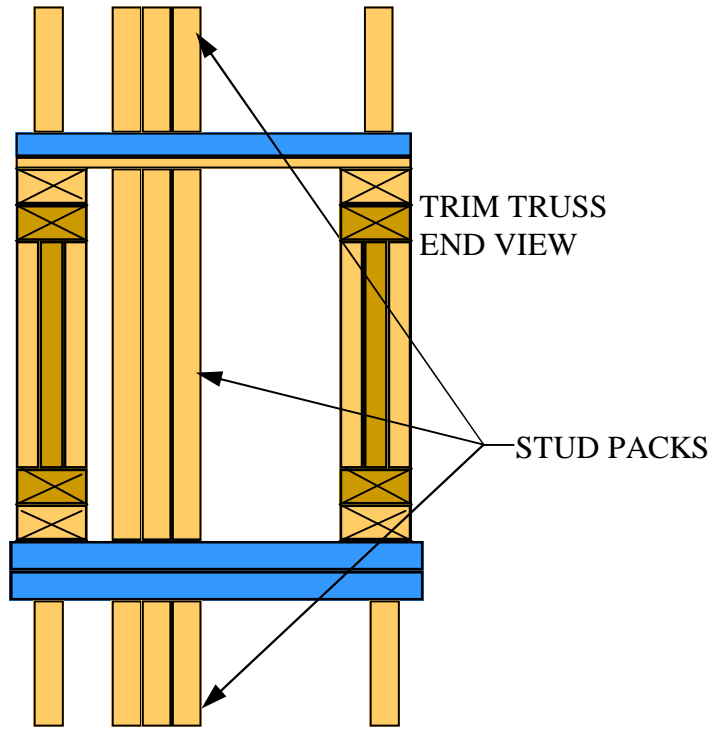
Detail 10



**PROPER CONCENTRATED
LOAD TRANSFER:**

Use stud packs to transfer load continuously from concentrated load above floor system to foundation.
Number & size of studs to be determined by building designer.

TRIM TRUSS
END VIEW



Detail 14

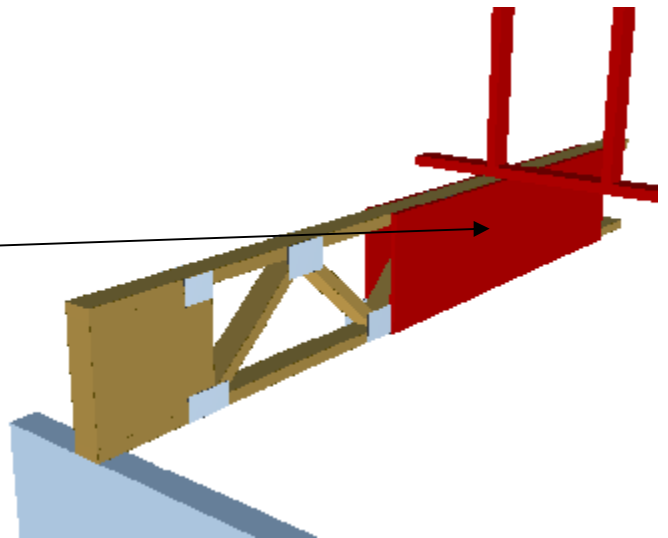
**REINFORCEMENT FOR LOADBEARING
WALL or CONCENTRATED LOADS:**

****Engineering required****

Job specific truss drawings will detail reinforcement.

For typical bonus room applications reinforcement may not be required. See *Table 3*.

Detail 18

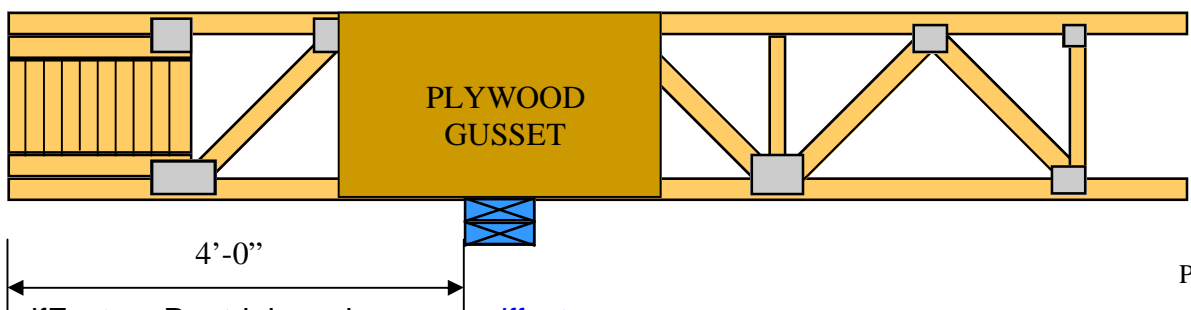


4' -0" CANTILEVER:

Maximum Cantilever using this detail: 4' - 0"

Uniform Floor load only - No added loading.

Attach 36" x 16" x 3/4" plywood gusset to each face using structural wood adhesive and 10d nails @ 6" o/c into top & bottom chords. Gussets must have full contact with bearing support. **Minimum overall truss span is 12' - 0"**.

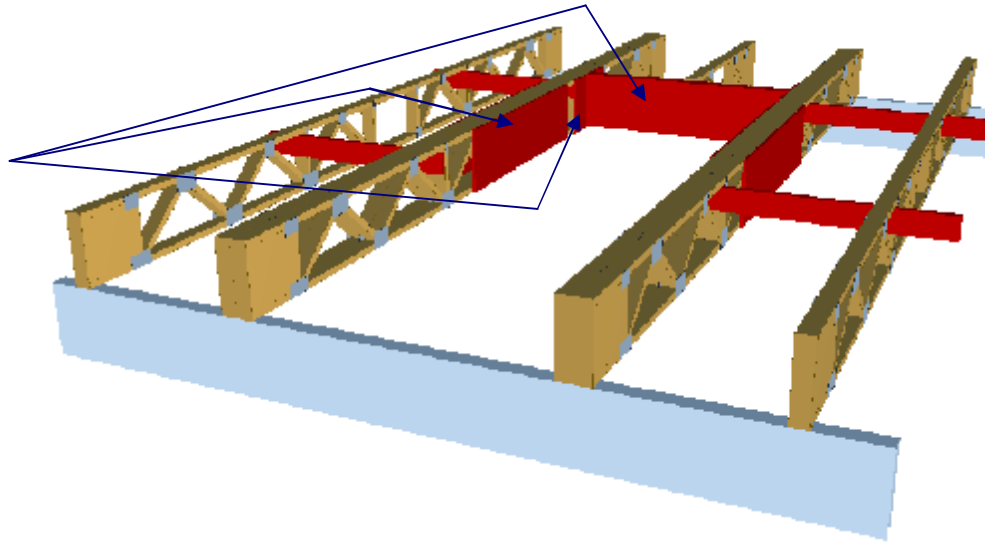


Detail 19

STAIR OPENING:

****Engineering required****

Job specific truss drawings will detail connections required for Multi-ply truss, plywood gussets, headers & hangers.

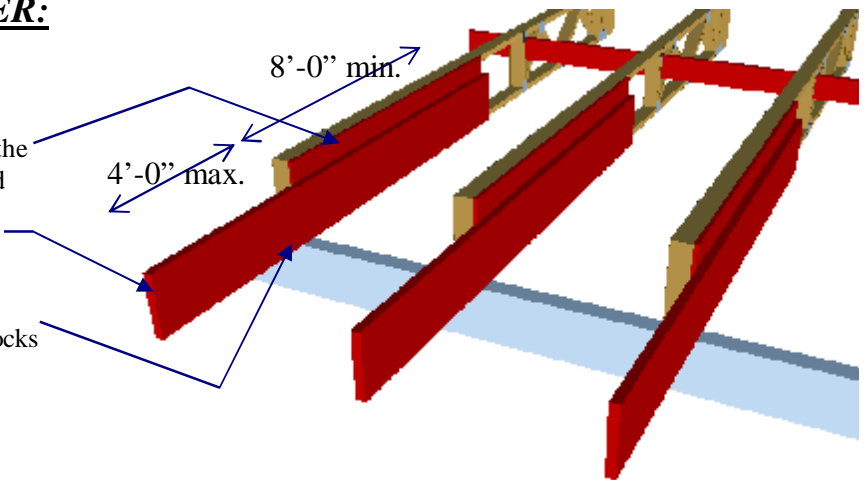


DETAIL 20

STEP DOWN BALCONY CANTILEVER:

Uniform floor loads only.

- Attach 8'-0" x 16" x 3/4" plywood gusset to one face of the truss using structural wood adhesive & 10d nails spaced 6" o/c into top & bottom chords.
- Attach 12' joist (**2x8 or larger SP#2 min.**) to plywood gusset using 3 rows of 10d nails spaced 6" o.c.
- Maximum cantilever is 4'-0".
- Ensure 2x cantilever has solid bearing contact—USE blocks or shims if required.
- Minimum truss span - 8'-0"

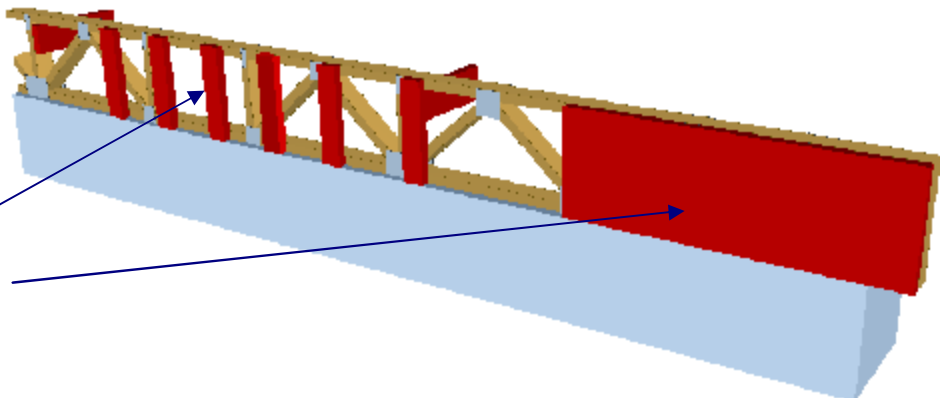


DETAIL 21

END WALLS & INTERIOR SUPPORT WALLS:

3 METHODS TO PROPERLY SUPPORT END WALLS OR INTERIOR SUPPORT WALLS:

1. 2X Vertical blocks applied to face of truss flush with edge of wall.
2. Rimboard applied to face of truss flush with edge of wall.
3. Pre-built or site framed "Knee Wall" the same depth as truss.



DETAIL 22

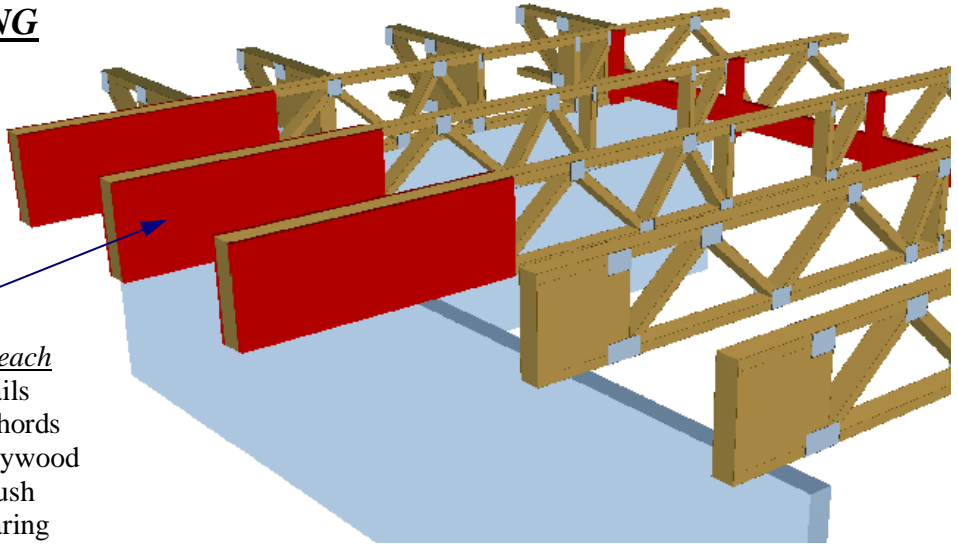
2'-0" (MAX) LOAD BEARING
CANTILEVER:

LIMITS:

- 2,000# Maximum point load
- 2'-0" Maximum cantilever distance from edge of load bearing support.
- Minimum Truss Length—12'-0"
- Maximum Truss Spacing—24" o/c

Modifications required:

3/4" plywood gussets (16"x48") added to each face of truss. Attach with 10d common nails spaced 6" o/c into all covered members (chords & webs) and structural wood adhesive. Plywood gussets must be continuous (one piece), flush with end of truss & must be flush with bearing support.



DETAIL 23

CANTILEVERS AT CORNERS
OF BUILDING:

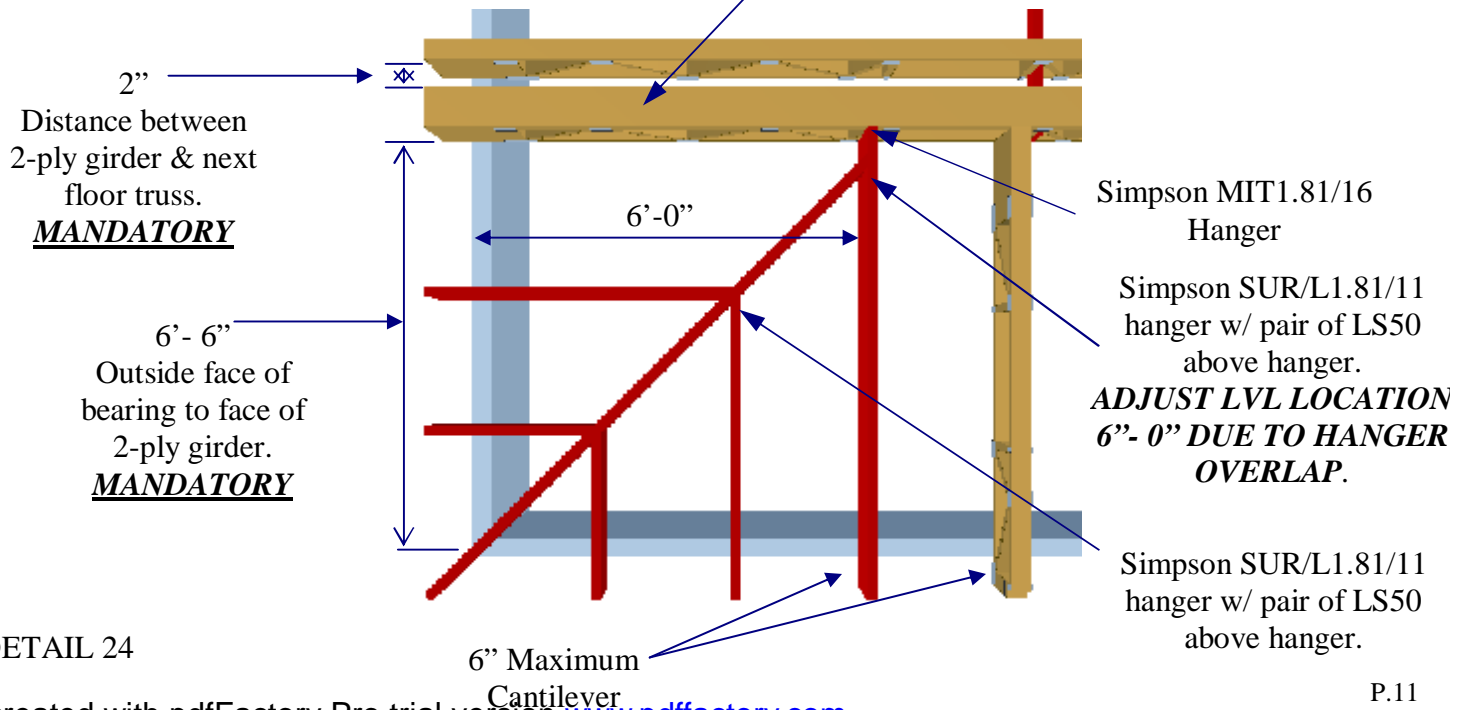
Hip set material—1 ply 16" LVL

MANDATORY Girder Setback— 6' - 6"

MANDATORY – 2" distance between 2-ply girder & adjacent floor truss.

2-PLY GIRDER CONNECTIONS:

- Connect plies with Simpson SDS 1/4x6 or USP WS6 wood screws installed in top chord only, spaced 16" o/c maximum.
- Anchor each end of 2-ply girder truss to wall with pair of Simpson H2.5A connectors installed diagonally across from each other.



DETAIL 24

E-Z TRIM MAXIMUM REACTION BY BEARING SIZE: Table 4

Reactions below are for trusses only. No end closure is required for the following reactions. For trusses with rafter cuts see *Detail 5*.

BEARING WIDTH:	MAXIMUM REACTION:
1-3/4"	2,000 lbs
3-1/2"	3,000 lbs
5-1/2"	4,500 lbs

E-Z TRIM VERTICAL LOAD TRANSFER AT BEARINGS: Table 5

The load transfers below are in addition to the truss reaction loads. **E-Z TRIM** trusses will not require special end closure treatment in many applications. However, the building designer may specify an end closure for other reasons. Contact Capitol Truss with questions regarding load transfer.

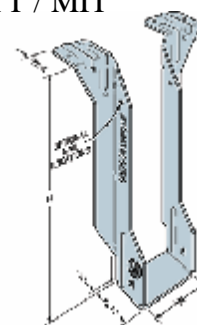
Maximum Vertical Load Transfer from wall above.	End Closure (or Reinforcement at Interior Bearings) Based on APA specs for Rimboard & plywood.
500 plf	7/16" APA rated structural panel (OSB or plywood)
1,000 plf	3/4" APA rated structural panel (OSB or plywood)
1,333 plf	1" APA rated structural panel (OSB or plywood)
1,600 plf	7/8" APA STURD-I-FLOOR
2,000 plf	2 layers of 3/4" APA rated structural panel (OSB or plywood)
3,000 plf	2x4 squash block
3,300 plf	1" APA rim board
4'400 plf	1-1/8" APA rim board

TYPICAL SIMPSON HANGERS: Table 6

Remember – 1) Always fill all nail holes. 2) Install web stiffeners when top chord of truss is **not** supported. Refer to Simpson Catalog for nailing requirements, max. uplift, max. loads, other useable hangers, etc. Simpson Technical Support phone #: 800-999-5099, web site – www.strongtie.com.

TRUSS WIDTH	HANGER MODEL	MOUNTING TYPE	NAILS	
			Header	Joist
2-1/2"	ITT316	TOP	10d	10d x 1-1/2"
	MIT316	TOP	16d	10d x 1-1/2"
	IUT316	FACE	10d	10d x 1-1/2"
	SUR/L2.56/14	SKEWED	16d	10d x 1-1/2"
3-1/2"	ITT416	TOP	10d	10d x 1-1/2"
	MIT416	TOP	16d	10d x 1-1/2"
	IUT416	FACE	10d	10d x 1-1/2"
	THA422	ADJUSTABLE	See Simpson Catalog	
	SUR/L414	SKEWED	16d	16d
	THAR/L422	SKEWED ADJUSTABLE	See Simpson Catalog	
5-0" (double 2-1/2")	MIT5.12/16	TOP	16d	10d x 1-1/2"
7-0" (double 3-1/2")	HU812	FACE	16d	16d
	WPI416-2 (welded)	TOP	16d	10d x 1-1/2"

ITT / MIT



THA

